

GEOTONE S - WOOD ACOUSTICAL PLANKS AND PANELS

geometrik.com



APPLICATIONS

- Ceiling and Walls
- Auditoriums & Conference Rooms
- Airports
- Home Theaters
- Lobbies/Reception Areas
- Multipurpose Areas
- Banks & Executive Boardrooms
- Schools, Colleges, Universities
- Large Open Office Spaces
- Performance Spaces
- Worship Facilities

AVAILABLE LEED CREDITS*

- MR 4: Recycled content
- MR 5: Locally manufactured & harvested materials
- MR 6: Rapidly Renewable Materials
- MR 7: FSC Chain of Custody Certification
- EQ 4.2: Low VOC Finishes
- EQ 4.4: Composite panels: No Added Urea Formaldehyde

** Must be specified prior to tender and ordering.*

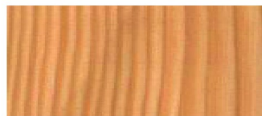
STANDARD WOOD SELECTION**



Douglas Fir



Western Cedar



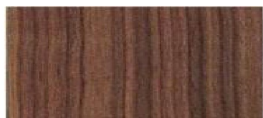
Western Hemlock



Western Birch



Alder



Walnut



Cherry



Mahogany



Euro Steamed Beech



Bamboo



Ash



White Maple



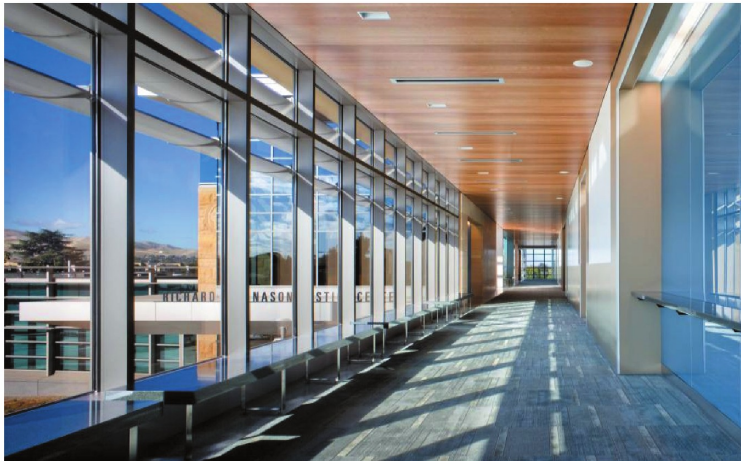
Red Oak



White Oak

**** Contact the manufacturer for other wood species availability. Due to the nature of real wood (variation in grain, texture and color) the finished product may range from light to dark.**

GEOTONE S - WOOD ACOUSTICAL PLANKS AND PANELS



SPECIFICATION

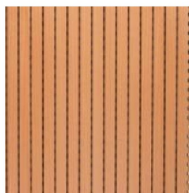
Specie:	see chart
Core:	MDF, SDF
Thickness:	5/8", 11/16", 3/4"
Sizes:	Panels - custom size up to 4' x 8' T&G Planks - 1' wide x 8' long
Face:	2 mm wide groove
Profiles:	GT1000S, GT1700S, GT3400S
Class A:	available upon request
Finish:	20 sheen clear low VOC
Custom Stain:	available upon request
Backer:	non-woven acoustic fabric
Edges:	Planks: T&G Panels: Edge Banded Ceiling Tile: <ul style="list-style-type: none">- Lay-in- Tegular Edge- Side Groove

Panel weight: approx. 2 lbs/SF

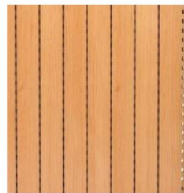
PRODUCT STYLES



GT 1000 S



GT 1700 S



GT 3400 S

PRODUCT DESCRIPTION

Geotone S is available in three options:

- 1) Custom Size Panels;
- 2) T&G Planks;
- 3) Ceiling Tile 2' x 2'.

Geotone S T&G Plank System is the most suitable for applications where a monolithic look is desired with minimum visible panel reveals. Seamless nature of T&G connection allows coverage of large surfaces without a single reveal. The only more or less visible reveal would be between the planks' ends. Planks are installed progressively, with or without insulation behind. Geotone S Wall Planks can be installed with grooves running vertically or horizontally. Both Geotone S Wall and Ceiling Planks are installed using special Geometrik T&G clips.

Geotone S Panels are available in different sizes, and can be factory cut to any custom length or width up to 4' wide x 8' long. Geotone S Wall Panels are installed using standard Z-clip or Z-Bar. Natural wood is "live" material therefore a minimum 3/8" reveal between panels is recommended by the manufacturer to allow for expansions and contractions

Geotone S Ceiling Tiles are supplied in different sizes: 2' x 2'; 2' x 4'; 2' x 8'. Panels are easily suspended from standard 15/16 Black Heavy Duty T-Bar. There are three edge treatments available for Geotone S Ceiling Tile: Lay-In, Tegular Edge & Side Groove.

Please call our technical support team 1-888-306-0024 for more information.

BENEFITS

- Monolithic appearance of T&G planks
- Easy installation using standard hardware or custom engineered installation hardware
- Low to High NRC Rating
- Contribute towards LEED certification
- Choice of veneer and core materials
- Custom engineered solution

CONTACT INFO



Geometrik Manufacturing Inc.
1449 Velocity Street
Kelowna, BC V1V 3C2
Ph. 1-888-306-0024 or 250-769-1500
Fax: 250-769-1520
www.geometrik.com



ENVIRONMENTAL STATEMENT

As part of our ongoing commitment, we put every effort in preserving our forest for future generations. That is why we actively promote panels made of engineered wood that is environmentally friendly, easy to recycle, made of recycled fiber and has a low impact on the environment. Geometrik is offering wood ceiling and wall panels that are manufactured using environmentally preferable products (EPP) such as low emitting sustainable fiberboard (SDF) that contains pre-consumer and/or post-consumer recycled fiber and has no added urea formaldehyde. We use low VOC finishes to further contribute to sustainable design.